



**SUBURBAN
RAIL LOOP**

Suburban Rail Loop: Connecting our suburbs

Presentation to Whitehorse Business Group

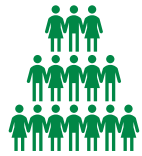
Alison Karmelich and Lissa van Camp

23 July 2021



1. Project background and context
2. Project scope and benefits
3. Engagement to date
4. Approach to business support
5. Planning assessments and approvals
6. Next steps

Policy foundation: Plan Melbourne



Population
3.5 mil
more people



Jobs
1.5 mil
more jobs



Housing
1.6 mil
more houses



Transport
10 mil
More trips/day



Environment
Low carbon
economy

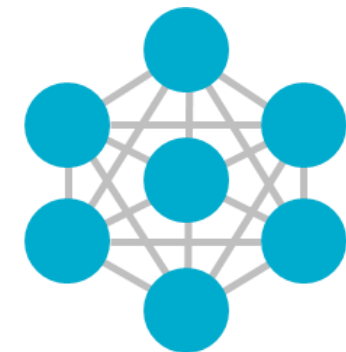


**Community
& Liveability**
Keep Victoria
Number 1

A network of
"20 minute neighbourhoods"
9million people by 2056
... connected by a short walk,
cycle or public transport

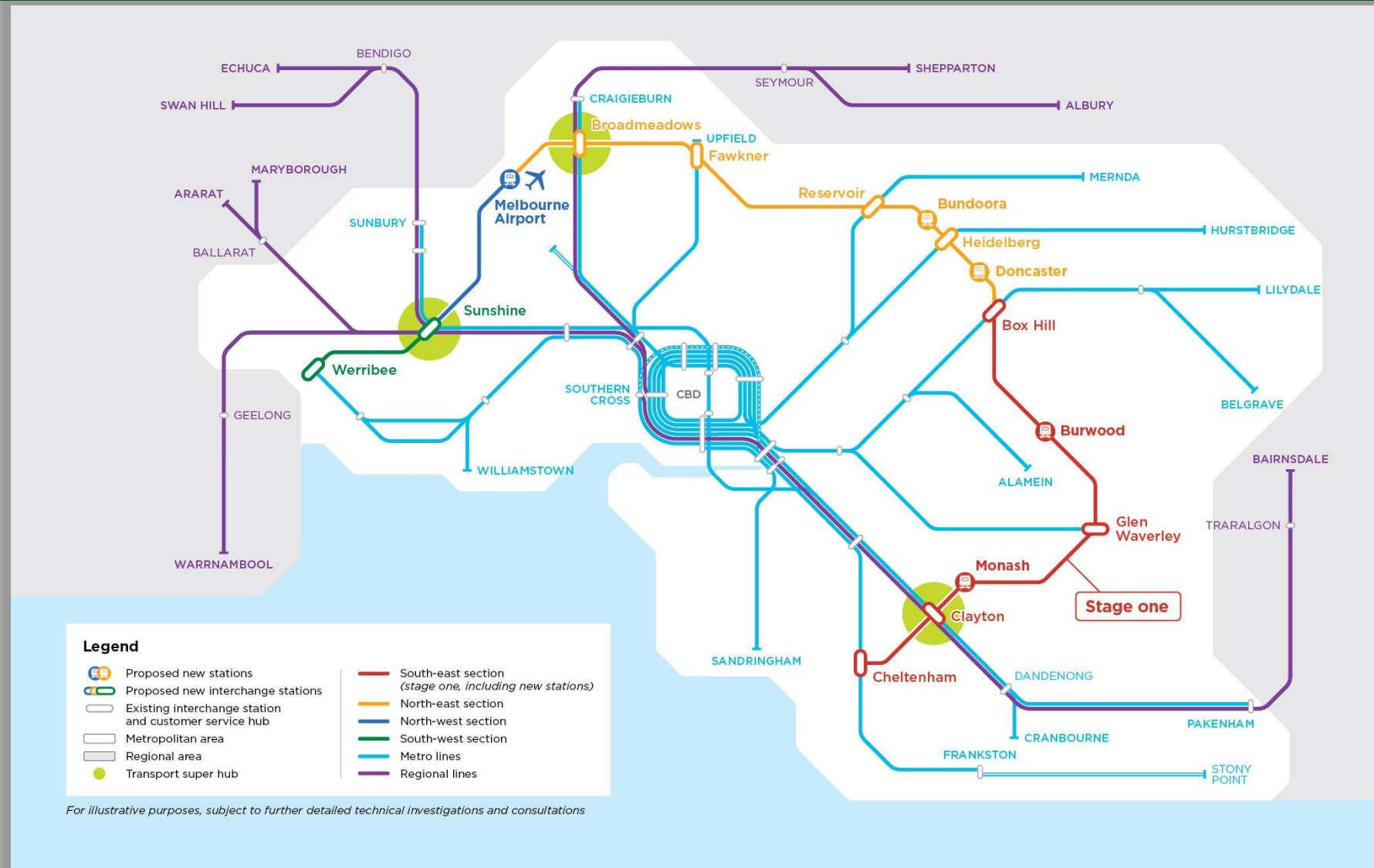


Monocentric city structure



Polycentric city structure

Suburban Rail Loop



Rail and infrastructure

Stage One – Cheltenham to Box Hill



- **26km twin tunnel** standalone line from Cheltenham to Box Hill
- Six new **underground stations**
- **Regional passenger interchange** at Clayton
- **Stabling facility**
- **Supporting infrastructure**
- **Dedicated fleet** of high-tech trains, 4-5 carriages long
- **Turn-up-and-go** service
- Passengers will easily transfer across networks using the **same ticketing system**



Stage One – Station Locations



Legend

- SRL Station - Stage One
- SRL Rail Alignment - Stage One
- Existing Rail Alignment
- Waterway
- Transport Superhub
- Metro Tunnel

Indicative only

Stage One – Box Hill



Stage One - Burwood



••• Station footprint (below ground)

● Station entrance

--- SRL rail tunnel

Indicative station location. Concept only.

Not to scale.

Stage One travel time savings



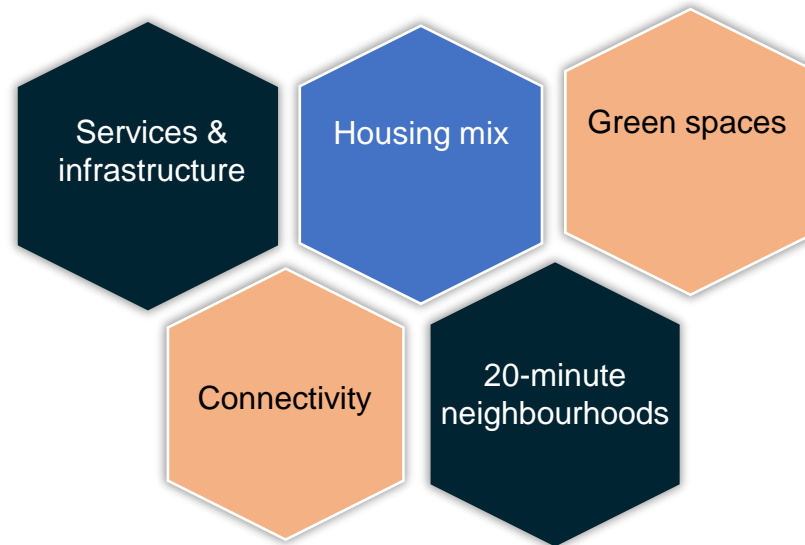
- **3-4 minutes** between stations
- **22 minutes** from Cheltenham to Box Hill
- Savings of **up to an hour** between key employment, health, education and retail precincts (one-way)
- **80%** of Melburnians to benefit from reduced travel times
- Regional travel time savings



More than a rail line

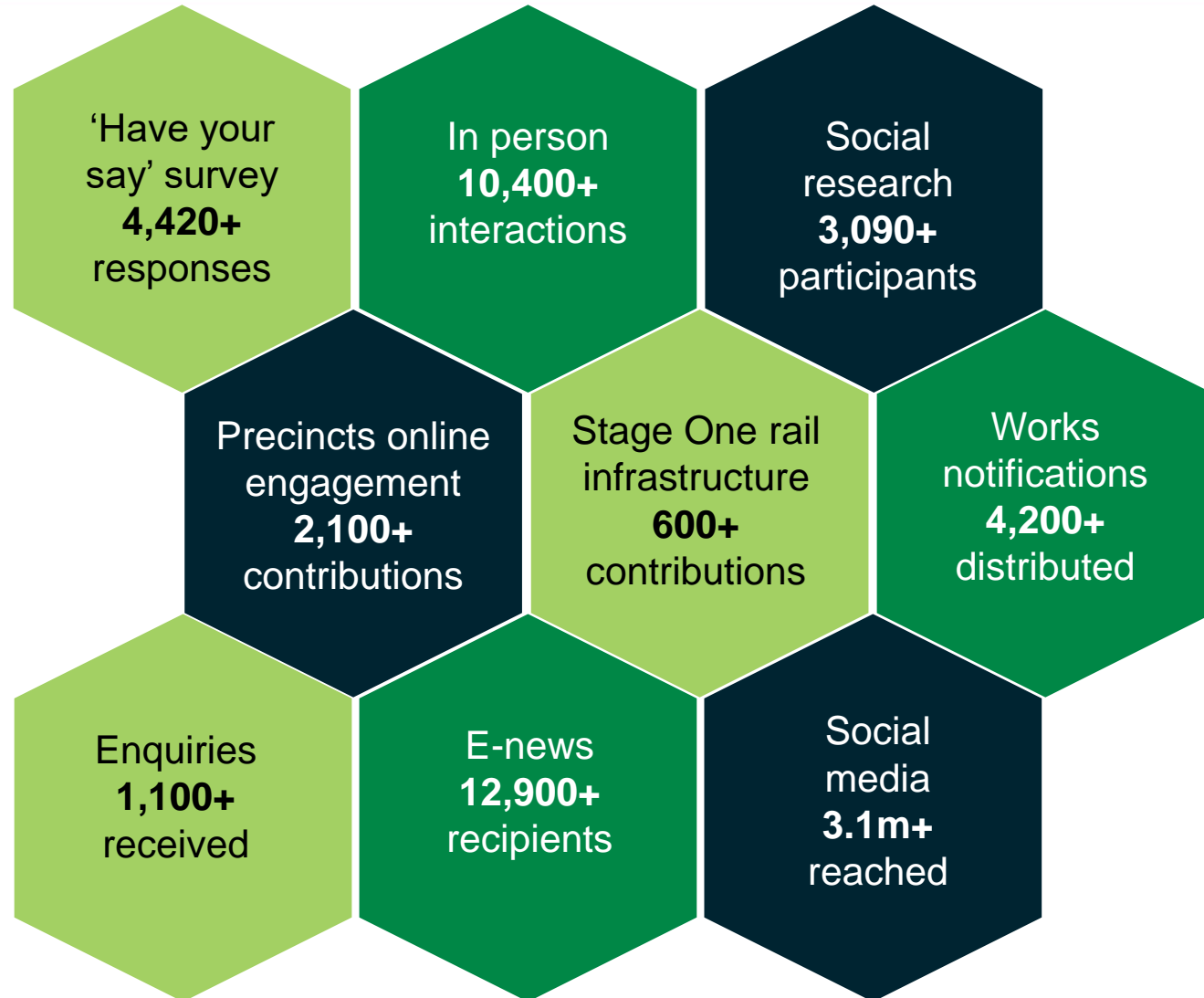


An opportunity to plan the services, amenity and infrastructure we're going to need outside of the CBD for future generations



Stakeholder and Community Engagement

Engagement to mid 2021



Community engagement guided by DHHS advice, with many activities carried out via online platforms

Engagement with businesses



Activity	Purpose	Timing
Letters to landowners and tenants of properties near the proposed Stage One stations	Series of letters advising landowners and tenants that their properties are either in an 'area of interest' or 'general vicinity' of the proposed Stage One stations	Late 2020 – completed
Virtual Engagement Room	Simulates a face-to-face information session where visitors can explore information boards, read fact sheets and ask questions of project specialists Links to Stage One stations Engage Vic page (refer below)	Launched 15 February 2021 – ongoing to mid-2021
Stage One stations Engage Vic page	Capture feedback about potential impacts of the project, including design and construction impacts that are important to people	Launched 15 February 2021 – ongoing to mid-2021
Further engagement with landowners and tenants of properties likely to be impacted by the project – letters and doorknock	Provide further information to landowners and tenants regarding the anticipated impact on properties	March 2021 – ongoing 1:1 phone calls and meetings
Business, retail and social impact assessments	Understand potential impacts on businesses and inform mitigation measures	Underway
Community drop-in information sessions	Face-to-face sessions along the Stage One corridor	July 2021

Online engagement

Virtual Engagement Room and Engage Vic page



suburbanrailloop.vic.gov.au/Have-Your-Say



Community engagement guided by DHHS advice, with many activities carried out via online platforms

- Community information sessions
 - **Box Hill** – 5 and 10 July
 - **Burwood** – 13 July (2nd session postponed due to COVID restrictions)
 - **110 attendees** – strong attendance from local business owners
- Queries ranged from **station location and design**, to **precinct related opportunities** for the community, **tunnel alignment** and **business support** through acquisition and construction (including the potential for business relocation)
- Enquiries received from information sessions being followed up through direct contact (phone discussions, email response, 1:1 meetings)
- Additional enquiries regularly received through the following channels:
 - SRLA project information line **1800 105 105**
 - SRLA email: contact@srla.vic.gov.au
 - Contact page via SRLA website (suburbanrailloop.vic.gov.au/Contact)

- Dedicated **Landowner and Business Support Manager**
- **Assessing individual needs** through conversations to identify unique circumstances and similar challenges for businesses
- Business needs and impacts **further assessed through EES** –will identify potential areas to be addressed and measures to manage/mitigate impacts and disruptions
 - Business, retail and social impact assessments will highlight key issues
- SRLA looking at measures adopted on **other major projects** – how we can tailor what’s worked successfully to better support businesses through project disruption or acquisition
 - E.g. relocation support and assistance, practical initiatives to build business resilience during construction
- Will **engage government agencies and support services** (e.g. Victorian Small Business Commission, business mentoring) to deliver assistance and programs to individual businesses

Land acquisition process



1. Initial contact
2. Notice of Intention to Acquire
3. Notice of Acquisition
4. Compensation



Landowner & Tenant Information Pack, March 2021

- Engagement with businesses will occur prior to construction or impacting activities commencing
- Types of support that may be offered includes:
 - **Promotional activities** – marketing and promotional activities to encourage awareness and patronage
 - **Activation** – create unique experiences to encourage patronage (e.g. pop-ups, street fairs etc)
 - **Partnerships** – work with councils, events, tourism organisations to raise awareness of businesses and encourage patronage
 - **Upskilling** – support education and support programs offered by Small Business Victoria and local councils
 - **Business plans** – support business planning

Planning Assessments and Approvals

Overall assessment and approvals



Environment Effects Statement

- Comprehensive assessment of impacts of designing, building and operating the project under *Environment Effects Act 1978*, informed by risk assessment

Draft Planning Scheme Amendment

- Approval under *Planning and Environment Act 1987* to design, build and operate the project. Draft Planning Scheme Amendment would be exhibited and scrutinised together with the EES

Cultural Heritage Management Plan

- Approval to manage impacts to cultural heritage under *Aboriginal Heritage Act 2006*



Key steps in the Environment Effects Statement (EES)



- EES process is coordinated by the Victorian Department of Environment Land Water and Planning (DELWP) on behalf of the Minister for Planning
- It involves a public exhibition and submissions period
- Considers a range of potential impacts including environmental, heritage, urban design, traffic/transport, business, social and land use
- Identifies requirements that may be put in place to manage or mitigate these impacts – Environmental Performance Requirements set the outcomes for project design, construction and operation

Steps	Indicative timing	Activities
Preparing the EES	Late 2020 – late 2021	<ul style="list-style-type: none">• Further studies and investigations to understand potential impacts• Stakeholders and the community engaged to inform the development• SRLA prepares the EES
Public review and independent inquiry	Late 2021 – 2022	<ul style="list-style-type: none">• Exhibition of the EES for public review and comment• Public submissions go to an independent inquiry• Public hearings may be held, and submitters are heard by the inquiry
Minister's assessment	2022	<ul style="list-style-type: none">• Minister for Planning provides an assessment• Government and decision-makers consider the Minister's assessment• Assessment informs whether the project is approved under Victorian law

EES engagement – how you can be involved



- Stakeholder and community engagement informs development of the EES and statutory approvals for Stage One of Suburban Rail Loop
- Stakeholders and communities can have their say on key areas of project design and planning processes
- Businesses are encouraged to submit their feedback on the project and what it means for them
- During the EES public exhibition, you can view planning documents, maps and project information so you can make a formal submission
- Stay informed and involved:
 - Sign up to email updates or ask a question through our website
 - Follow Suburban Rail Loop on Facebook and Instagram
 - Look out for updates via our newsletters and website



Next steps

Next steps 2021-2022



Ongoing

Planning, development
Site investigations
Community & Stakeholder
Consultation

2021

Business & Investment Case
Market Engagement
Initial & Early Works EOI
EES

2022

EES complete
Contractor Procurement
Initial Works commence

Questions?



Legend

- SRL Station - Stage One
- SRL Rail Alignment - Stage One
- Existing Rail Alignment
- Waterway
- Transport Superhub
- Metro Tunnel

Indicative only