

Level Crossing Removals

Coolstore Road level crossing removal (Croydon) and station upgrade

› Project cost estimate: \$240M

Removal of the level crossing, including construction of a new, modern station and rail bridge over the road.

Design offers the greatest opportunity to connect Croydon's city centre - currently divided by the rail line.

Project will improve safety, reduce congestion, and allow more trains to run, more often.

Contributes to creating a level crossing-free Lilydale line which will change how locals live, work and travel. Journeys on the Lilydale line will be faster and local roads safer.

Preliminary site investigations have started and construction will be completed by 2025.



Coolstore Road level crossing removal (Croydon)



Artist's impressions

Bedford Road level crossing removal (Ringwood)

› Project cost estimate: \$98M

Removal of the level crossing and construction of a new rail trench under the road which will improve safety, reduce congestion, and allow more trains to run, more often.

Contributes to also making the Belgrave line level crossing free from the city to Ferntree Gully.

Site investigations have started and construction will be completed by 2025.



Dublin Road level Crossing Removal (Ringwood East)

› Project cost estimate: \$186M

Construction of a new station and a rail trench under the road.

The preferred design will work well with the topography and ground conditions and will maintain access to the Ringwood East shopping precinct from Dublin Road.

Contributes to creating a level crossing-free Lilydale line and will improve safety, reduce congestion, and allow more trains to run, more often.

Preliminary site investigations have started and construction will be completed by 2025.



Council Projects

Jubilee Park Redevelopment

Project Outcomes

- **Stage 1 \$3.5M**
 - › Multipurpose Pavilion
 - › 200sqm social space
 - › Balcony
 - › Female friendly
 - › Accessible (DDA)
 - › CV Office
 - › Future proof (Stage 2)
- **Stage 2 \$3.5M**
 - › Indoor Training Centre
 - › 5 Lanes
 - › Female friendly
 - › Public/Game Day amenities
 - › Storage
 - › Spectator viewing



Artist's impression

Jubilee Park Stage 1 Pavilion

\$3.5M Pavilion redevelopment



Jubilee Park Stage 2 Indoor Training

\$3.5M Pavilion redevelopment



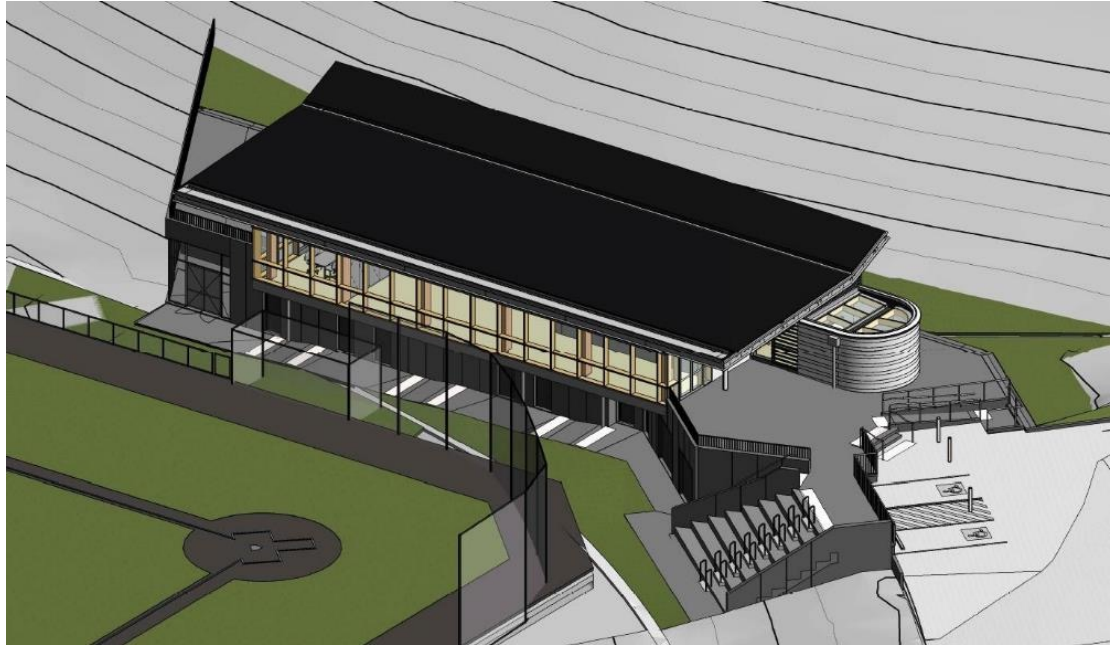
View from training entry

Proclamation Park Multi-purpose Pavilion

\$3.2m Multipurpose Pavilion Redevelopment

Project Outcomes

- Multipurpose Pavilion
- Female friendly
- Multipurpose space
- Accessible (DDA)
- Club Office



Proclamation Park Multi-purpose Pavilion



Springfield Park Redevelopment

\$3.2M Pavilion Redevelopment



Dorset Recreation Reserve

\$7.6M Multipurpose Pavilion, Sportsfield Redevelopment & lighting

Project Outcomes

- Multipurpose Pavilion
- Pitches (1 x synthetic and 1 x grass)
- Lighting
- Carpark



PERSPECTIVE VIEW 01: SPECTATOR DECK



PERSPECTIVE VIEW 02: SOUTH WEST

Croydon Community Wellbeing Precinct



Croydon Community Wellbeing Precinct

Hub A - Pre-Concept

Ground floor plan



Croydon Carpark



Heathmont Carpark

Enhancing:

- Landscape plan
- Height & context

Refining:

- Possible integration with DoT projects
- Sighting and façade
- Local contexts

Next steps:

- Currently at planning approval stage



Heathmont Carpark



Ringwood Carpark

- Bolstering heritage with input from Ringwood District Heritage Assoc.
- Bolstering heritage with input from Blood Family representatives



- Reviewing sighting and context
- Façade material and colours
- Landscaping and heritage elements
- Pedestrian and vehicle movement